

Joe Poehlman  
Phone: (718)•474•7993  
Fax: (718)•474•7634  
515 Beach 72nd Street  
Rockaway Beach NY 11692

atlantic515@aol.com  
<http://atlanticservice.biz/>



# ATLANTIC SERVICE & EQUIPMENT

Marine Supplies and Repairs

Gas/ Diesel Repower Specialists



## Discount Boating SUPPLIES & ACCESSORIES

Quality boating products at the right price!

2018







**Gauge Style Radio**  
see page 3



**ECHOMAP Plus**  
WiFi Sonar/Chartplotter  
see page 8



**Bluetooth Wireless**  
M.O.B System  
see page 13



**Floating Six Person Lounge**  
see page 48



**Marine Flex Hose**  
see page 32



**Micron Extra with Biolux**  
see page 58

# OVER 100 NEW PRODUCTS INSIDE!



We're pleased to present the **NEW Homeport®** discount boating supplies and accessories catalog.

We are committed to providing you with a wide selection of quality products at great pricing to enhance your boating experience.

In addition to the popular items in this catalog, we have **over 20,000 parts and accessories** available from our warehouse, generally within 48 hours, at competitive pricing.

The Homeport® name represents the purchasing power of over 100 Homeport® locations in our region and is your assurance of **quality boating products at the right price!**



## IN ADDITION WE OFFER:

- Local, knowledgeable personnel that help you select the right product for your boat.
- Installation and repair assistance.
- Warranty assistance.
- A giant selection of replacement engine parts and accessories.
- Service assistance on props, canvas, fiberglass repair, boat lettering and more!





## FUSION AM/FM/Sirius Ready Multimedia Receivers



MS-UD755 w/ Wi-Fi connectivity requires ethernet router

- Single din cut-out
- Fusion Link Ready
- AM/FM/Sirius Ready/USB Rear
- A2DP/AVRCP Bluetooth® Streaming
- Pandora control with Thumbs UP/Thumbs down voting
- Internal UNIDOCK (Old Apple, Apple Lightning, Android and Microsoft phone)
- Apple® iOS® and MTP Android™/Windows® Media Playback
- 2-AUX in
- Class D
- NMEA2000 capable

No.	Description	Price
FUS MSUD650	Monochrome Display	\$479.99
FUS MSUD755	Color LCD Display	\$599.99

## FUSION MS-RA55 Compact Bluetooth Marine Stereo

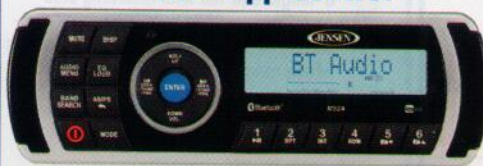


The most compact FUSION stereo system yet, the MS-RA55 delivers clear and dynamic sound reproduction in a marinated, space-saving chassis. With Bluetooth audio streaming, users can stream music from any compatible device to the MS-RA55, allowing boaters to enjoy their favorite streaming service apps. Featuring a sleek front face finish with a shallow-mount case design, the new low-profile MS-RA55 design allows for easy installation on small boats, tenders and personal watercraft, adding the highest quality sound to vessels that previously lacked the space for a full-feature stereo system.

- Bluetooth® wireless technology
- Multi-zone™ technology
- 2.3" LCD display
- IPX5 rated water resistant front panel
- Compact size - a shallow dash mount depth of only 2-1/8" makes it perfect for small boats and personal watercraft.
- Package comes with pair of EL602, 6" Speakers

No.	Description	Price
FUS MSRA55	Radio Only	\$179.99
FUS MSRA55KTS	Stereo Package	\$229.99

## JENSEN MARINE AM/FM/USB Bluetooth Stereo with App Control



- 160 watts (40W x 4)
- Bluetooth® interface capability (A2DP/AVRCP)
- iPod®/iPhone® ready (via USB)
- AM/FM tuner
- Low battery warning
- Rear AUX input (RCA)
- Wired remote control capable
- Pre-amp line-out audio (RCA)
- Conformal-coated circuit boards
- Standard DIN chassis
- App ready (jControl)

**NEW**

**\$199.00**

No. JMA MS2ARTL

## JENSEN MARINE AM/FM/USB Compact Waterproof Bluetooth Stereo Package w/ Speakers



This stereo features 160 watts, a USB input for MP3 devices along with an auxiliary input and a line out (RCA). This stereo has a large, daylight readable LCD display with blue backlit controls to offer boaters a user-friendly interface. Fits a 3" gauge hole.

**\$189.99**

No. JMA CPM150

## JENSEN MARINE 6.5" Bar Mount 2-Way Speakers



These speakers will hang on tight with their versatile clamp adapters and produce the best sound on the market with the available JAH240BT Bluetooth Amp added on.

- Full range of audio reproduction through 6.5" polypropylene woofer with 1" PEI dome tweeter
- 100 watts maximum handling power
- Waterproof (IPX5)
- Aluminum mounting clamp
- Includes round and square clamp adapters - Fits round bars 1" to 3" - Fits square bars 3" x 1.5" and 3" x 2"
- Corrosion resistant

No.	Description	Price
JMA JXHD65ROPSBT	Speakers w/Bluetooth Adapter	\$399.95
JMA JXHD65ROPSK	Speakers Only	\$279.95

## PROSPEC

## MIL-PRV19 Dash Mount AM/FM/Bluetooth® Stereo

**NEW**

- Bluetooth Audio Streaming
- AM/FM
- 4 x 40 watts Aux Input
- USB Input
- All-weather faceplate
- UV Stable
- Fits a standard tachometer opening

No. PSP MILPRV19

**\$138.99**



## POLY-PLANAR WATERPROOF MARINE AUDIO SYSTEMS

## GSMR30 Marine Radio

**NEW**

The GSMR30 is a full-featured, waterproof marine radio designed specifically for the marine environment.

MP4/MP3/Photo Playback Gauge Series Marine Radio

- Bluetooth Audio Streaming
- Easy Pairing with Auto Reconnect
- AUX-In
- USB-In for Music, Movie and Photo
- 18 Preset AM/FM Stations
- Compatible with Audio Output of Smartphones and MP3 players
- 1 Video Output
- 1 Subwoofer Output
- 1 Pre-Amp Output

**\$214.99**

No. PLP GSMR30



## PROSPEC

## AM/FM/USB/Bluetooth® Stereo

**NEW**



MR70BT is a Mechless Receiver, Mechless means no CD mechanism, allowing you to bring that portable media device and stream tunes.

- AM/FM
- 4x40W
- Auxiliary Input
- Bluetooth®
- USB Input
- Rotary Encoder

**\$103.99**

No. PSP MILMR70BT





## Marine Bluetooth Modules

The Bluetooth modules stream audio from any A2DP Bluetooth capable Apple, Android, Windows, Blackberry or other device directly to the connected FUSION marine stereo.

No.	Description	Price
FUS MSBT100	Uses auxiliary ports	\$44.99
FUS MSBT200	Uses satellite port for 700 and 205 Series	\$74.99



## 6" and 7" Marine 2-Way Speakers

These Marine Speakers come complete with black and white grilles and are designed to withstand the harsh marine environment. Complies with IP65 Waterproof and Dust Standards. Comply with ASTM Standards for UV Stability and Salt/Fog Resistance. High efficiency design reduces battery drain. Sold in pairs.



\$149<sup>99</sup>

\$179<sup>99</sup>

No. FUS MSFR6022 6" Speaker, 200 watts

No. FUS MSFR7022 7" Speaker, 260 watts



## 6" Shallow Speakers

- Tweeter type – PEI
- Peak Power – 150Watts
- Impedance – 4 Ohms
- Mounting depth – 1-5/8"
- Mounting diameter – 5"



\$59<sup>99</sup>

No. FUS MSEL602



## 4" Marine Box Speakers

Extremely versatile – can be used on your boat or outdoors. Great for helms already crowded with instruments and perfect for Alloy boats that can't have flush-mount speakers installed.

### FEATURES

- Max Power: 100 Watts
- Adjustable wall bracket supplied
- Box Type: Sealed



\$79<sup>99</sup>

No. FUS MSQS420



## Gunwale Mount Speaker

NEW

Mount these full-sized speakers out of the way under the gunwale, where they're protected from the elements, yet close enough to deliver rich, full sound. The molded, one-piece plastic grill protects the speaker components from splash and spray. The two-way vented port design offers full range response. Peak power 200 watts /pair. Available in white color only. Dimensions: 10.43" H x 6" W x 5.31" D.



\$94<sup>99</sup>

No. PLP MA9020



SINCE 1897

## VHF Antennas

**8' length end-fed with matching stub**  
An economical and lightweight, self-supporting antenna for good communications where range is not the predominant factor.

- 6dB gain.
- Includes 15' of RG-58 coax cable with PL-259 connector.

No. SHA 5206N – Nylon Ferrule

\$56<sup>99</sup>



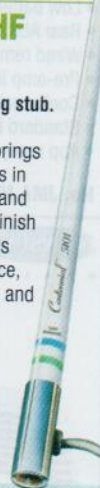
## 5101 Centennial™ VHF Antenna

**8' length 6 dB end-fed with matching stub.**  
A new standard of excellence in an economical antenna! Shakespeare brings you the best of the high-end features in an 8' antenna with a brass element and a smooth, high gloss, polyurethane finish that won't turn yellow in the sun. This antenna delivers not only performance, but superb value. One section. Brass and copper elements.

- Chrome-plated brass ferrule w/ standard 1" -#14 thread
- Includes 15' RG-58 cable and a PL-259 connector

No. SHA 5101

\$64<sup>99</sup>



## QuickConnect™ VHF Antenna System

To make it easy and convenient to install/replace your antenna, Shakespeare designed a QuickConnect™ antenna system with cable attached to the mount instead of the antenna itself. Simply screw on/off the antenna, and enjoy this hassle-free and cost-effective alternative to the traditional antenna installation. The QuickConnect™ products have a 2 year warranty and have the same mounting hole pattern as our standard antenna mounts. Note: When selecting a QuickConnect™ antenna, **you must pair it with a QuickConnect™ mount (sold separately).** Includes PL259CPG Connector.



No.	Length	dB Gain	Ferrule	Price
SHA QC4	4'	3 dB	Chrome-plated Brass	\$49.99
SHA QC8	8'	6 dB	Chrome-plated Brass	\$59.99
SHA QCMS			QuickConnect™ S.S. Ratchet Mount	\$66.49



## 6-1/2" Coaxial White Marine Speaker

- Weatherproof and designed for marine use
- Max power handling: 120 Watts (Pair)
- Magnet: 9.8 oz.
- Mounting hole diameter: 5"
- Mounting depth: 2-1/3"
- ASTM B117 salt spray exposure compliant
- ASTM D4329 UV exposure standard compliant

No. JMA MS6007WR

\$59<sup>99</sup>



## 6.5" 2-Way Multi-Element Marine Speakers

NEW

These fully marinated speakers not only deliver Infinity sound, but they also feature RGB lighting to bring the sound to life. Engineered to withstand sun, salt, sea spray and wash downs, they feature sealed motor structure, UV resistant one-piece cast-polymer baskets, a sealed magnet and rubber surrounds.

- Power Handling: 75W RMS, 225W peak
- Frequency Response: 50Hz – 20kHz
- Impedance: 4 ohms
- Cutout Diameter: 5.0" (128mm)
- Mounting Depth: 2.65" (67mm)

\$189<sup>99</sup>



No. PSP INF622MLT - Titanium  
No. PSP INF622MLW - White



## 6-1/2" 150 Watt Dual-Cone Marine Speakers

Rubber surrounds offer superior edge protection and are much more reliable than foam. And a grille-mounted tweeter allows the front of the woofer cone to be sealed, protecting the motor structure from sea spray.

- Type: 6" Dual Conet
- Nominal impedance: 4 ohms
- Sensitivity (2.83V/m): 90db
- Its outside diameter is 7-1/8" with a hole cutout of 5-1/16" and depth of 2-13/16"



No. PSP JBLMS6510

\$82<sup>99</sup>





## SiriusXM® Satellite Radio Antenna

Using the latest Satellite Radio technology, this SiriusXM® Approved. Accessory meets or exceeds the most recent specifications set forth by SiriusXM.

- 4-way mounting system – Flexibility to choose
- SiriusXM approved accessory
- 2 Year Limited Warranty

No. SHA SRA50

**\$83<sup>99</sup>**



## 5241-R 3' VHF Marine Band 3dB Gain Antenna

The Classic 5241-R VHF antenna fulfills the need of bass boats, center console fishing boats, or any vessels where compact size is most important.

- Sealed, tin-plated copper wire coil
- Chrome plated brass canister minimizes de-tuning
- Stainless steel whip (36")
- Requires mount with center hole for passage of the supplied cable
- 15' RG-58 coax cable and a PL-259 connector included

No. SHA 5241R

**\$79<sup>99</sup>**

## Antenna Rail Mount

Heavy duty chrome-plated mount.

No. SHA 4188SL  
– for 1-1/2" Rails

**\$64<sup>99</sup>**



## Straight Mount

4" high, 1"-14 thread stainless steel mount. Perfect for radar arches.

No. SHA 4365

**\$28<sup>99</sup>**



## Stainless Steel Rail Mount

Ratchet action and designed for quick and easy installation on 7/8" and 1" vertical or horizontal rails. Handles antennas up to 8" and has feed-through provision for cable.

No. SHA 4190

**\$43<sup>99</sup>**



## Ratchet Mount Antenna Base

Solid Nylon. Mounting: standard 1"-14 male threads. For 497, 5200. Not for longer antennas in self-supporting mode as this nullifies all guarantees. Four-way ratchet design with handle. For deck or bulk-head mounting. Bulk pack.

No. SHA 4186BP

**\$9<sup>99</sup>**



## Ratchet Mount Antenna Bases

Stainless steel mount. Four way ratchet design with handle for deck of bulkhead mount, has 9/32" hole for cable. Standard 1"-14 male threads.

**4187HD Heavy-Duty:** Developed to accommodate self supporting installations of the new Galaxy Style 5399, 2-piece, 9-1/2" antenna. The extra strength will also be welcome in the T-Top, Hardtop, Radar Arch, and other high stress applications.

No. SHA 4187

**\$43<sup>99</sup>**

Regular

**\$58<sup>99</sup>**

Heavy Duty

Regular  
No. SHA 4187HD  
Heavy Duty



## ICOM VHF Floating Marine Transceiver (Submersible Protection)

- 5 Watt-1500 mAh Li-ion battery up to 11 hours
- 4-step battery life indicator
- Weather channel with weather alert functions
- Favorite channel function
- Monitor function opens noise squelch
- IPX7 Waterproof – It Floats
- Instant access to Channel 16 or programmable call channel
- Loud Audio
- Dual/Tri-watch
- USB Charging

No. ICM M25GRAY  
No. ICM M25BLUE

**\$143<sup>99</sup>**

**NEW**



## Uniden MHS75 Handheld VHF With Li-Ion Battery

- Compact Design
- Dual/Triple/Quad watch
- Memory channel scan
- Weather alert

- 11hr LION battery
- JIS8 submersible
- DC clip on charger

**\$99<sup>99</sup>**

No. UND MHS75



## Uniden Atlantis 270 Handheld VHF

- NEW Floating Design
- 10 Hour Battery Life
- 11.2516 watt
- Display Size: .70" x 1.45"
- Power Boost Key
- AC & DC Adapters Included
- Charging Cradle
- Glow seals and Power Key

- AC & DC Adapters Included
- Charging Cradle
- Glow seals and Power Key

**\$89<sup>99</sup>**

No. UND ATLANTIS270



## Uniden MHS126 Handheld Floatable VHF

- Floats
- Emergency Strobe light
- Includes High capacity 1150 mAh Lion battery
- 11 Hour battery life
- 1W/2.5/6 Watt TX Power Boost Key
- Glow-In-The-Dark Seals and Power Key

- Submersible JIS8/IPX8
- AC charger, DC charger and Charging cradle
- NOAA Weather channels and Alert

No. UND MHS126

**\$124<sup>99</sup>**



## Floating 5 Watt Handheld VHF

- Submersible IPX7 (3.3 feet or 1 meter for 30 minutes)
- 10 hours of battery life
- Supplied with a 1030 mAh Li-Ion battery, 110 VAC chargers and a charging cradle
- All USA, International and Canadian Marine Channels
- Programmable Scan, Priority Scan and Dual Watch
- NOAA Weather channels and Weather Alert
- Battery life indicator
- 3 Year Waterproof Warranty

**\$99<sup>99</sup>**

No. STN HX150



## Compact Floating Handheld VHF

- Floating
- Submersible IPX8 - 5FT for 30 minutes
- 5 Watt transmit power
- Unique USB charging system
- Volume & squelch indication on the display
- Water activated LED light
- Preset Key (Maximum 10 channels)
- Preset channel scan function
- 600 MW loud internal speaker audio
- NOAA Weather channels
- Programmable Scan, Priority Scan, Dual watch and Tri Watch
- Supplied with 1560 mAh 3.7V Li-Ion Battery, AC USB Plug and charging cable

**\$129<sup>99</sup>**

No. STN HX300



Handhelds

**\$20.00 Rebate on HX210**  
Available Through 7/31/18.

Download at [www.standardhorizon.com](http://www.standardhorizon.com)



## 6W Compact Floating Marine Handheld VHF

**NEW**

- Memory Scanning, Priority Scanning, Dual and Triple watch, NOAA Weather Alert, easy-to-read large LCD display, Battery Life display on the LCD, and a transmit Time-Out Timer (TOT).
- Floating / Submersible IPX7 Waterproof rating (3.3 feet or 1 meter for 30 minutes)
- All USA, International and Canadian channels
- Selectable 6W / 2.5W / 1W output power
- Programmable function keys
- Receive WX and FM radio bands 76MHz to 108MHz
- High resolution dot matrix LCD display
- High capacity 1850 mAh Li-Ion battery
- 12VDC and 110VAC charging cables and charging cradle included
- All NOAA weather channels and weather alerts
- Speaker mic Jack
- 3 year waterproof warranty
- 3 hour desktop rapid charger

No. STN HX210

**\$119<sup>99</sup>**





# VHF RADIOS



## The Explorer GX1600 VHF Radio

The Explorer GX1600 VHF Radio is designed for easy and convenient mounting, with an ultra thin, rear case. Only 3.5" deep, the rear design case takes up less space when bracket mounting the radio to the dash and offers flexibility if flush mounting the radio.

- Meets ITU-R M493-13 Class D regulations
- ClearVoice noise reducing microphone
- Programmable scan • Channel 16 priority scan
- Dual watch • All NOAA weather channels and weather alerts
- Customizable channel names • One preset channel
- 3 programmable soft keys • Backlit dot matrix screen
- 4 different NMEA inputs/2 different outputs
- Submersible by JIS-8 standards
- 3-year waterproof warranty

No. STN GX1600W – White  
No. STN GX1600B – Black



**\$179<sup>99</sup>**

**Fixed Mounts** \$30.00 Rebate on GX1700 & GX1300  
Available Through 7/31/18  
Download at [www.standardhorizon.com](http://www.standardhorizon.com)



## The Explorer GPS (GX1700)

With an internal 12 Channel GPS built into the front panel, there is no need to hassle with wiring the radio to a GPS for DSC.

- Integrated 12 Channel WAAS GPS receiver
- GPS antenna built-in to the front panel allows reception when bracket or flush mounted
- DSC test call and Auto DSC channel change selection
- Automatically poll the GPS position of up to 4 ships using DSC
- Enter, Save, and Navigation to waypoint with Compass page
- GPS Compass display
- Submersible JIS-8 1.5M (4.92Ft) for 30 minutes
- Noise cancelling microphone with channel UP/DOWN, 16/9 and H/L keys
- NOAA weather channel selection with alert
- Programmable Scan, Priority Scan, and Dual Watch
- Preset Key stores up to 10 favorite channels, with scan function
- Oversized display with customizable channel names
- NMEA 0183 Input and Output of GPS information to other devices
- Programmable soft keys • 3 Year Waterproof Warranty

No. STN GX1700W



**\$249<sup>99</sup>**



## Eclipse GX1300

Fixed Mount Class D DSC VHF  
The GX1300 ECLIPSE is an affordable ultra-compact Class D VHF radio that has been re-engineered to meet the IPX8 submersible waterproof rating of 4.92 feet for 30 minutes, redesigned with a new Easy to Operate Icon/Menu System featuring an oversized full dot matrix LCD. The GX1300 ECLIPSE is backed by an industry leading 3-year waterproof warranty.

- Meets ITU-R M493-13 Class D DSC (Digital Selective Calling)
- Ultra-Compact rear chassis design (Only 5.9" deep)
- Easy to Operate Icon/Menu System
- Built in Separate Receiver for CH70 (Receiving DSC Calls)
- DSC test call and Auto DSC channel change selection
- GPS position and Time Shown on a Full-dot Matrix Display when Connected to a GPS Receiver
- NMEA In and Output Connections to a Compatible GPS Chart Plotter
- Programmable soft keys
- Automatically poll the GPS position of up to 4 ships using DSC
- Submersible IPX8 waterproof rating (1.5M or 4.92 feet for 30 minutes)
- All USA/International and Canadian Marine Channels
- Preset key used to recall up to 10 favorite channels
- NOAA weather channel selection with Weather Alert
- Programmable Scan, Priority Scan, and Dual Watch

No. STN GX1300B – Black VHF - only  
No. STN GX1300W – White VHF - only  
No. STN GX1300BKIT – Black Kit w/VHF SHA5101 Antenna & S.S. Mount  
No. STN GX1300WKIT – White Kit w/VHF SHA5101 Antenna & S.S. Mount



**\$149<sup>99</sup>**  
Radio only

**\$239<sup>99</sup>**  
Kit

## Uniden UM385 VHF

Kit includes white radio, SHA5206N antenna and nylon base.

- Class D VHF Radio
- DSC Position Send and Request
- Large Full Dot Matrix Display
- JIS7 Submersible
- NOAA Emergency Weather Alert Including S.A.M.E.
- Memory Channel Scan
- Triple/Dual Watch
- All USA, International & Canadian Marine Channels
- NMEA Input/Output
- Rugged Microphone with Channel 16/9 and triple watch select keys

No. UND UM385KIT – Kit w/SHA 5206N and Nylon Base  
No. UND UM385BK – Black VHF - only  
No. UND UM385 – White VHF - only



**\$199<sup>99</sup>**  
Kit

**\$114<sup>99</sup>**  
Radio only

## Uniden UM435 VHF

Kit includes radio, 5101 antenna and S.S. base.

- All USA, Canadian and International Marine Channels
- Rugged Speaker Microphone with Channel, Up/Down, Scan and 16/9 Keys
- S.A.M.E. Emergency/Weather Alert
- 1/25 Watt Transmit Power
- DSC(Digital Selective Calling)
- 3 Year Warranty Protection
- 10 Weather Channels
- Connectors: NMEA0183 Input And Output
- Size: 6.25" (W) X 2.5" (H) X 6.0" (D)

No. UND UM435KIT – Kit w/VHF SHA5101 Antenna & S.S. Mount

No. UND UM435 – White VHF - only  
No. UND UM435BK – Black VHF - only



**\$229<sup>99</sup>**  
Kit

**\$124<sup>99</sup>**  
Radio only



## M330 Fixed Mount Marine VHF Radio

Perfect for small spaces, the M330 is filled with all the features and functionality you have come accustomed to. Performance is not comprised in this small, easy to install radio. This new Class D DSC marine radio has a modern look and is available in two colors, black and white.

- Fixed Mount Class D DSC Marine VHF Series
- Compact Size for Easy Installation
- Entry Level Radio
- Clear Dot Matrix LCD
- Integrated Easy-to-Use Interface
- Loud Speaker with Microphone
- IPX7 Waterproof & Environmental Protection

No. ICM M330W - White  
No. ICM M330B - Black



**NEW** **\$178<sup>99</sup>**



## VHF 110 Marine Radio

Easy to install and use, just plug and play via the NMEA 2000 network to compatible Garmin chartplotters and MFDs. Provides standard Class D DSC functionality (distress calling and direct calling with user programmed MMSI). Includes frequency bands for all U.S., Canadian and international marine channels and 10 NOAA weather channels.

- Also NMEA 0183 compatible.
- Fixed-mount with plug and play via the NMEA 2000® network
- Standard Class D Digital Selective Calling (DSC) functionality (distress calling and direct calling with user programmed MMSI)
- In case of trouble, DSC may improve your chances of a rapid rescue
- 25 W of transmit power
- Frequency bands: all U.S., Canadian and international marine channels; 10 NOAA weather channels

Unit Dimensions, HxWxD: 3.4" x 6.7" x 5.8"  
No. GMN 0100165300



**NEW** **\$279<sup>99</sup>**



# FISHFINDERS – ELECTRONICS

## HUMMINBIRD

Simply. Clearly. Better.

### HELIX 7 CHIRP SI GPS G2

Days like these call for the HELIX™ 7 CHIRP SI GPS G2 and its full arsenal of amazing technologies, including Side Imaging®, Down Imaging® and SwitchFire® Sonar. The seven-inch wide screen is the perfect canvas for your choice of split-screen views. The single card slot accommodates Humminbird® LakeMaster®, AutoChart™ and AutoChart™ Pro, as well as Navionics®+. Leading-edge technology has never been closer in reach.



- Temperature: Built In Transducer
- Backlight: LED
- Unit Size - Gimbal Mount: 10.54"W x 5.44"H x 1.13"D
- Unit Size - Indash Mount: 10.54"W x 5.80"H x 3.68"D
- Waypoints, Routes, Tracks/Points: 2,500, 50, 50/20,000
- Humminbird Mapping: Optional
- Navionics Platinum+: Optional

- Speed: GPS Speed Included
- Transducer Mounting: Transom
- GPS Receiver: Included
- Speed: GPS Speed Included
- GPS Chartplotting: Included
- Navionics+: Optional
- Platinum Capable: Optional

No. HUM 4103101

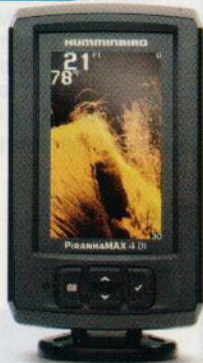
**\$729<sup>99</sup>**

## HUMMINBIRD

Simply. Clearly. Better.

### PIRANHAMAX 4 DI

The PiranhaMAX 4 DI features a 256 color 480V X 272H, 4.3" display with 2400 watts PTP power output with Down Imaging sonar.



- Temperature: Built-In Transducer
- Unit Size - Gimbal Mount: 3.914"W x 7.335"H x 3.621"D
- Transducer Mounting: Transom

No. HUM 4101601

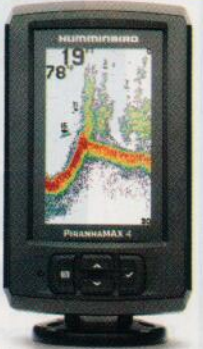
**\$159<sup>99</sup>**

## HUMMINBIRD

Simply. Clearly. Better.

### PIRANHAMAX 4

The PiranhaMAX 4 features a 256 color 480V X 272H, 4.3" display with 2400 watts PTP power output with Dual Frequency sonar.



- Display Colors Grayscale: 256 Colors
- Depth Capability: 600 ft
- Temperature: Built-In Transducer
- Transducer Mounting: Inside Hull or Transom

No. HUM 4101501

**\$106<sup>99</sup>**

## HUMMINBIRD

Simply. Clearly. Better.

### HELIX 7 CHIRP DI GPS G2

See fish and vertical lure presentations by viewing CHIRP Down Imaging® and SwitchFire® Sonar side-by-side on the wide, 16-bit display. The reliable, internal GPS offers 2500 waypoints and 50 routes, so you can return to your most productive spots time and time again. A single, micro SD card slot delivers Humminbird® LakeMaster®, AutoChart™ and AutoChart™ Pro, as well as Navionics®+. Also has our new user interface and operating system.



- Temperature: Built In Transducer
- Unit Size - Gimbal Mount: 10.54"W x 5.44"H x 1.13"D
- Unit Size - Indash Mount: 10.54"W x 5.80"H x 3.68"D
- GPS Chartplotting: Included
- Waypoints, Routes, Tracks/Points: 2,500, 50, 50/20,000
- Navionics Platinum+: Optional

- Speed: GPS Speed Included
- Transducer Mounting: Transom
- GPS Receiver: Included
- Humminbird Mapping: Optional
- Navionics+: Optional
- Platinum Capable: Optional

No. HUM 4103001

**\$527<sup>99</sup>**

## HUMMINBIRD

Simply. Clearly. Better.

### HELIX 5 DI G2

The HELIX 5 DI G2 with our new user interface and operating system, features a brilliant 800H x 480V, 5" 256 color display with backlight. Down Imaging and DualBeam PLUS sonar with 4000 watts PTP power output. Maximize your angling experience with the Humminbird HELIX 5 DI fishfinder system.



- Sonar Standard: Down Imaging/DualBeam PLUS
- Standard Sonar Coverage: 16°, 28°, 45° & 75° @ -10d
- Standard Sonar Frequency: 455/800/200/455 kHz
- Power Output RMS: 500 Watts
- Temperature: Built-In Transducer
- Unit Size - Gimbal Mount: 7.55"W x 4.64"H x 3.3"
- Unit Size - Indash Mount: 7.55"W x 4.28"D x 1.13"D
- Mounting Options: Gimbal or Optional In-Dash

No. HUM 4102001

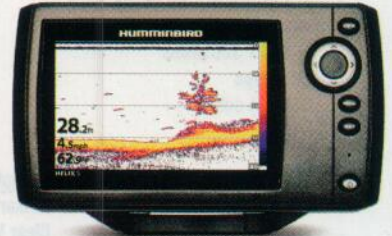
**\$259<sup>99</sup>**

## HUMMINBIRD

Simply. Clearly. Better.

### The HELIX 5 Sonar G2

With new user interface and operating system, features a brilliant 800H x 480V, 5" 256 color display with backlight. DualBeam PLUS sonar with 4000 watts PTP power output. Maximize your angling experience with the Humminbird HELIX 5 Sonar G2 fishfinder system.



- Temperature: Built-In Transducer
- Backlight: LED
- Unit Size - Gimbal Mount: 7.55"W x 4.64"H x 3.3"D
- Unit Size - Indash Mount: 7.55"W x 4.28"D x 1.13"D

No. HUM 4101901

**\$210<sup>99</sup>**

## HUMMINBIRD

Simply. Clearly. Better.

### HELIX 5 CHIRP GPS G2

#### Down Imaging and Side Imaging Models:

The HELIX 5 CHIRP DI GPS G2 with our new user interface and operating system, features a brilliant 800H x 480V, 5" 256 color display with backlight. CHIRP Side Imaging/Down Imaging and DualBeam PLUS sonar with 4000 watts PTP power output, Precision Internal GPS Chartplotting with built-in UniMap cartography with a micro SD card slot for optional maps or for saving waypoints. Maximize your angling experience with the Humminbird HELIX 5 CHIRP DI GPS fishfinder GPS system.



- Temperature: Built-In Transducer
- Transducer Mounting: Transom
- Speed: GPS Speed Included
- Backlight: LED
- Unit Size - Gimbal Mount: 7.55"W x 4.64"H x 3.3"Dr
- Unit Size - Indash Mount: 7.55"W x 4.28"H x 1.13"D
- GPS Receiver: Included

No. HUM 4102201 - DI Model  
No. HUM 4102301 - SI Model

**\$527<sup>99</sup>**  
SI Model

**\$369<sup>49</sup>**  
DI Model

Thousands Of Additional Products Available



## GARMIN. Striker 4 & Striker 4CV ClearVü 3.5-inch CHIRP Fishfinder with GPS

- Easy-to-use 3.5-inch color fishfinder with built-in, high-sensitivity GPS
- Find fish; mark and return to hot spots, docks and ramps
- Convenient keypad operation
- Striker 4 Includes CHIRP (77/200 kHz) sonar transducer; transmit power (200 W RMS)/ (1,600 W peak-to-peak)
- Clear Vu includes Clear Vu Transducer 500 W Power

Smooth Scaling™ graphics provide uninterrupted imagery when switching between depth-range scales. Sonar history rewind allows you to scroll back through sonar images to mark waypoints you originally may have missed. Plus, it has a built-in flasher and displays speed data.

### Physical dimensions

3.6" x 5.9" x 1.6"

### Display size, WxH

1.9" x 2.9"; 3.5" diag

### Display resolution, WxH

480 x 320 pixels

### Display type

HVGA color



No.	Description	Price
GMN 0100155000	Striker 4	\$119.99
GMN 0100187100	Clear Vu	\$179.99

## GARMIN. ECHOMAP™ Plus 44cv With CHIRP ClearVü Transducer

**NEW**

Preloaded with BlueChart g2 charts for the coastal U.S. Plus, it has Quickdraw Contours mapping software to instantly create personalized fishing maps on-screen with 1' contours as you fish. You own these maps. They are yours to keep private or share with the Quickdraw Community on Garmin Connect™. Plus, you can share waypoints and routes with other ECHOMAP or STRIKER units.

- Bright, sunlight-readable 4.3" combo
- Includes transducer for Garmin CHIRP traditional sonar plus CHIRP ClearVü™ scanning sonar with transom and trolling motor mounts
- Preloaded BlueChart® g2 charts for the coastal U.S.
- Built-in Garmin Quickdraw™ Contours mapping software instantly creates personalized fishing maps on-screen with 1' contours as you fish
- Share waypoints and routes with other ECHOMAP™ or STRIKER™ units



No. GMN 0100188601

**\$349.99**

## GARMIN. ECHOMAP™ Plus 64cv With CHIRP ClearVü Transducer

**NEW**



- Bright, sunlight-readable 6" combo
- Includes transducer for Garmin CHIRP traditional sonar plus CHIRP ClearVü™ scanning sonar with transom and trolling motor mounts
- Preloaded BlueChart® g2 charts for the coastal U.S.
- Built-in Garmin Quickdraw™ Contours mapping software instantly creates personalized fishing maps on-screen with 1' contours as you fish
- Use built-in Wi-Fi® to pair with the free ActiveCaptain™ app for access to OneChart™, smart notifications, Garmin Quickdraw™ Community data and more
- Share waypoints and routes with other ECHOMAP™ or STRIKER™ units

**\$549.99**

No. GMN 0100189001

## GARMIN. ECHOMAP™ Plus 74sv and 94sv With CHIRP ClearVü/SideVü Transducer

**NEW**



Features quick-release bail mount to make it easy to remove and take with you. Transom and trolling motor mounts included.

- Bright, sunlight-readable keyed-assist touchscreen combo
- Includes transducer for Garmin high wide CHIRP traditional sonar plus CHIRP ClearVü™ and CHIRP SideVü™ scanning sonars and compatible with Panoptix™ all-seeing sonar (sold separately)
- Preloaded BlueChart® g2 charts for the coastal U.S.
- Built-in Garmin Quickdraw™ Contours mapping software instantly creates personalized fishing maps on-screen with 1' contours as you fish
- Use built-in Wi-Fi® to pair with the free ActiveCaptain™ app for access to OneChart™, smart notifications, Garmin Quickdraw™ Community data and more

	7" Display	9" Display
Display size	7.0" diagonal (6.1" x 3.4")	9" diagonal (7.8" x 4.8")
Physical dimensions	9.8" x 5.5" x 2.0"	11.4" x 6.5" x 2.4"
Display resolution	400 x 800 pixels	400 x 800 pixels
Display type	WVGA display	WVGA display
Weight	1.7 lbs.	2.3 lbs.
Water rating	IPX7	IPX7

No.	Description	Price
GMN 0100189801	7.0" Diagonal Display	\$899.99
GMN 0100190201	9.0" Diagonal Display	\$1,099.99



# ELECTRONICS – GPS AND CHARTPLOTTERS

**GARMIN**

## 7-inch Touchscreen Chartplotter/Sonar Combo



- 7-inch high-resolution intuitive touchscreen controls
  - NMEA 2000® and NMEA 0183 support for network connectivity, including autopilots, digital switching, weather, FUSION-Link, VHF, AIS and more
  - Built in WI-FI connectivity
  - Garmin Marine Network support for sharing sonar, including Panoptix™ sonar, maps, user data, radar and IP cameras among multiple units
  - Preloaded U.S. LakeVü HD maps and BlueChart® g2 HD charts
- Experience an advanced navigation solution with this compact 7-inch GPSMAP 742 touchscreen combo. Includes wireless connectivity features for Garmin mobile apps, NMEA 2000 support and Garmin Marine Network capabilities for radar and Panoptix FrontVü collision avoidance sonar.

No.	Description	Price
GMN 0100173803	GPS MAP 742	\$999.99
GMN 0101019221	Transom Mt Transducer w/speed & temp	\$169.99
GMN 0101098220	20 degree Bronze Thru Hull w/temp	\$309.99
GMN 0101240210	Transom Mt Chirp Transducer	\$199.99

**HUMMINBIRD**  
Simply. Clearly. Better.

## In-Dash Digital Depthsounder



Humminbird® Digital Depth Gauges give you instant, reliable depth readings even at speeds of up to 70 mph, and can alert you to both deep and shallow water. Installation in any existing 2-1/8" opening is easy, and they wire to the ignition to automatically turn on. The display reads in feet, meters or fathoms, and you can pick a color to complement your boat's gauges. Customizable (2 face plates & 3 trim rings included)

- 1.25" LCD Display
- 600 ft depth
- Deep/Shallow water alarms

**\$102<sup>99</sup>**

No. HUM 4078601

**SEASTAR SOLUTIONS**

## Sterling Instruments

**NEW**



Ideal for outboards and stern drives! With stainless steel bezels, brushed aluminum dials and black pointers. Sterling instruments add a unique, polished look to any dash. Perimeter lighting provided for night operation.

- Instruments available for most outboards, stern drives and gasoline-powered inboards
- Scratch-resistant domed glass lenses
- U.S. and metric scales, with ISO symbols, where appropriate
- Optional add-on square or eyebrow bezels for modular appearance
- Perimeter lighting

No.	Description	Size	Price
TEL 63477P	Fuel Gauge E-1/2-F	2"	\$31.29
TEL 63479P	Oil Pressure Gauges (Electric):0-80 PSI	2"	\$30.99
TEL 63475P	Speedometer Kit 65 MPH (Pitot type) 10-65 MPH	3"	\$68.29
TEL 63473P	Tachometer (Electric): O/B & 4-Stroke Gas Engines 0-7000 RPM	3"	\$79.99
TEL 63480P	Water Temperature Gauge (I/O, I/B) 120-240°F	2"	\$30.69
TEL 63478P	Voltmeter-12 Volt 8-18 VDC	2"	\$31.49

**Faria Beede**

## Kronos Gauges

Polished Stainless Steel Bezel, Flat Lens, Perimeter Lighted Spun Aluminum dial with Gold and Black graphics. Gold Increments and Logo on dial are embossed, two piece Newport Pointer with Black hub. Mercury/Mariner/Mercruiser/Volvo DP/Yamaha-2001 and newer

### Kronos 6 Gauge Boxed Set

Inboard (4" Speedo (60 MPH) (Mech) 4" Tach (6000 RPM) 2" Fuel Level, 2" Voltmeter (10-16 VDC), 2" Water Temp (100-250 F), 2" Oil PSI (80 PSI)

No. FAR KTF024

**\$221<sup>99</sup>**



**Faria Beede**

## Chesapeake Analog GPS Speedometers



The GPS Speedometer is a drop in replacement for your current speedometer to match your existing instrument dash. GPS information is gathered from an internal GPS antenna. No external antenna required. The Faria GPS Speedometer uses a highly accurate 48 channel GPS receiver.

No.	Description	Price
FAR 33839	White	\$97.99
FAR 33749	Black	\$97.99

**Faria Beede**

## Depth Sounders

- Fits a standard 2-1/16" gaugehole.
- Depth range to 199 ft.
- Reads depth in meters, fathoms and feet.
- Oversized back-lit display.
- Keel off-set, shallow, and deep water alarms.
- Audio and visual alarms.

No. FAR 13850 – Chesapeake SS White

No. FAR 12850 – Euro Black

**\$139<sup>99</sup>**



## GREAT DEALS on all GAUGES!

**Faria Beede**

Chesapeake S.S. White and Black Gauges. Perimeter-lighted white dial with stylish blue and black graphics, polished stainless steel bezel, contoured black pointer domed glass lens.



No. White	No. Black	Description	Price
<b>Tachometers</b>			
FAR 33807	FAR 33710	0-6000 RPM	\$91.99
FAR 33817	FAR 33718	0-7000 RPM OB	\$91.99
FAR 33850		0-7000 RPM OMC System Check.	\$156.99
<b>Fuel Level Gauge</b>			
FAR 13801	FAR 13701	Empty-Full.	\$32.99
<b>Oil Pressure Gauge</b>			
FAR 13802	FAR 13702	0-80 PSI.	\$32.99
<b>Water Temperature Gauge</b>			
FAR 13804	FAR 13704	100-250°F.	\$32.99
<b>Voltmeter</b>			
FAR 13805	FAR 13705	10-16 volts DC.	\$32.99
<b>Hourmeter</b>			
FAR 13813	FAR 13713	0-10,000 hours.	\$59.99

## ProMariner Watersport Recreational Marine Binoculars 7x50

- Floats if dropped overboard
- Waterproof/ Fogproof
- Green Coated Lens
- Field of View 116m / 1000m
- Center focus
- Molded Finger Grips

No. PRO 11755

**\$172<sup>99</sup>**



Thousands Of Additional Products Available

9



# HORNS



## Sports Horn

100% ozone-safe, flammable propellant. Rugged, high-impact plastic trumpet — guaranteed unbreakable. Economical — more blasts per can than non ozone — safe horns. 5.5 oz. Can be heard up to a mile away.

No. FAL FSH

**\$13<sup>79</sup>**



## Signal Horn

- Provides up to 12 blasts per can
- Meets US Coast Guard requirements for boats up to 39' (12 meters)
- Provides a 112dB blast at 10 feet

**\$11<sup>39</sup>**  
1 oz

**\$12<sup>99</sup>**  
3.9 oz



## SEADOG LINE

### Cast Chromed Brass Bell

Chrome finish

- No. SDG 455001 — 6" dia.
- No. SDG 455721 — 8" dia.

**\$55<sup>99</sup>**

455001

**\$99<sup>99</sup>**

455721



### SS Mini Drop-In Single Horn

12 volt low pitch. Dimensions: 3"L x 3-1/4"W x 1-3/4"H. No. ONG 10050



**\$46<sup>99</sup>**

### SS Single Trumpet Horn

All stainless steel inside and outside. 12 Volt. Dimensions: 16-1/2"L x 4"W x 4-3/4"H. • Stainless Steel No. ONG 10027



**\$99<sup>99</sup>**

### SS Dual Trumpet Horn

All stainless steel inside and outside. Dimensions: 18-1/2"L, 8"W, 5"H. Meets ABYC specifications for boats up to 20 Meters (65 ft.). Guaranteed for 5 years. 12 Volt. • Stainless Steel

No. ONG 10028



**\$179<sup>99</sup>**

# MARINCO HORNS

## Mini Hidden Horn



- Totally sealed sound unit.
- Type 304 stainless steel diaphragm and mounting bracket.
- Dimensions: 3"L x 3-1/4"W x 1-3/4"H.
- 12 Volt.

No. AFI 11031

**\$24<sup>99</sup>**

## Mini Electric Horns



**\$59<sup>99</sup>**  
Dual

**\$29<sup>99</sup>**  
Single

Sealed sound unit. Stainless steel construction. Compact trumpet horn combines high styling with a powerful tone. Ideal for bass boats and small runabouts. 12 volt.

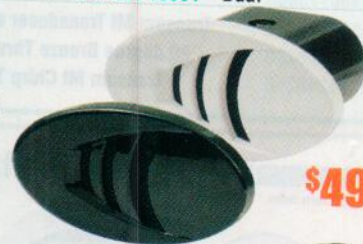
No. AFI 10035 — Single

No. AFI 10001 — Dual

## Hidden Compact Electric Horn

- Comes with both black ASA grill and white ASA grill
- Space requirements: 2"H x 3-3/8"W x 3-1/4"D
- 12 Volt

No. AFI 10079



**\$49<sup>99</sup>**

## Compact Trumpet Horns

All 18.8 stainless steel exterior. Designed to provide big sound and long-lasting shine. Sealed sound units prevent corrosion damage. Easily wired to your 12V system.

No. AFI 10010 — 14" Single

No. AFI 10011 — 16" Dual



**\$84<sup>99</sup>**  
Single

**\$162<sup>99</sup>**  
Dual

## Premium XL Trumpet Horns

All 18.8 stainless steel exterior. 12 Volt. Single: 16-1/2"L x 4"W x 4-3/4"H. Dual: 18-1/2"L x 8"W x 5"H.

No. AFI 10028XLP — Single

No. AFI 10029XLP — Dual



**\$96<sup>99</sup>**  
Single

**\$159<sup>99</sup>**  
Dual

## Dual Trumpet Air Horn

Chrome plated brass construction throughout, complete with compressor, air tubing, and all mounting hardware. 12 volt.

Dimensions: 17"L x 7"W x 3-3/4"H.

No. AFI 10106



**\$289<sup>99</sup>**



## Dual Tone Electronic Hidden Horn

Dual Tone Electronic Hidden Horn

- Small design allows for mounting in various locations
- Easy to install — only requires standard hole saw to make 2-3/8" hole and drill two holes for the mounting screws. Fits Many SEA RAY Boats

No. AQS 844007 — Horn

No. AQS 844321 — SS Cover

**\$15<sup>99</sup>**  
Cover



**\$36<sup>99</sup>**  
Horn